

*J. G. Parkhurst Eng.*

HES-XIII-156-B

PROVIDENCE, R. I.

CITY ENGINEER'S OFFICE

STREET LINE DEPT.

June 18, 1888

013921

Providence R. I.

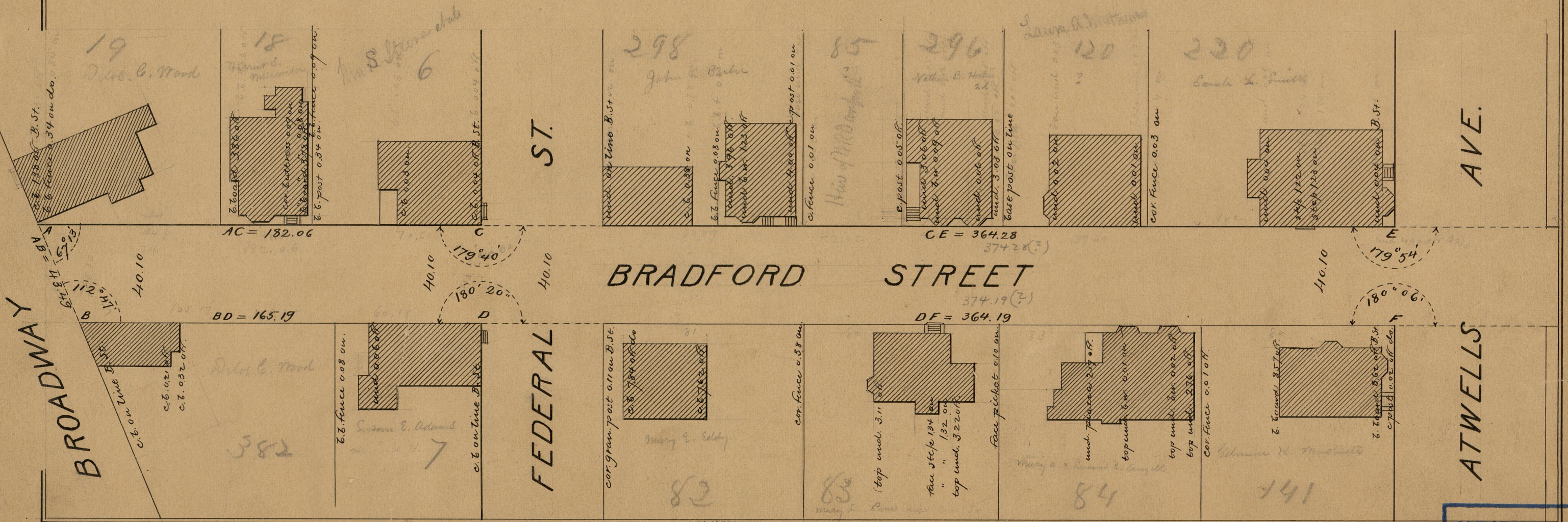
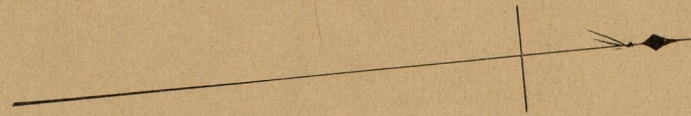
This plat accompanies  
our report of this date.

# PLAT OF BRADFORD STREET

FROM BROADWAY TO CEDAR ST.

IN TWO SHEETS

SCALE 40 FEET PER INCH



BROADWAY

ST.

FEDERAL

AVE.

ATWELLS

83  
A89

OFFICE No.	9647
DRAWER	83
SHEET	A-89